

Altech Corp.®

Quality System
Quality
Endorsed
Company



INDUSTRIAL
RECTANGULAR
CONNECTORS

PROTECTION
IP65
RATING

UL
E307105

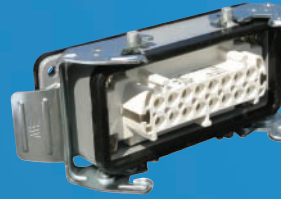
CE

Altech Corp.®



6-7

3 Pole with Ground, 10 AMP



14-15

16 Pole with Ground, 16 AMP



8-9

4 Pole with Ground, 10 AMP



16-17

24 Pole with Ground, 16 AMP



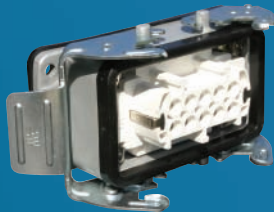
10-11

6 Pole with Ground, 16 AMP



18-19

32 Pole with Ground, 16 AMP



12-13

10 Pole with Ground, 16 AMP



20-21

48 Pole with Ground, 16 AMP



**Strain Reliefs/
Cable Glands & Polyflex® Tubing** 22-23

Get connected...

Housing with Cover



Surface Mount Housing



Gasket



Strain Relief



Female Insert



Male Insert



Complete Assembly



Housing Cover



Connector & Tubing



SURFACE MOUNT

... with Altech Corp.[®]



Hood with Cover



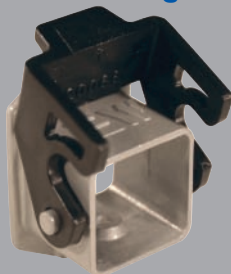
Complete Assembly



BULKHEAD MOUNT

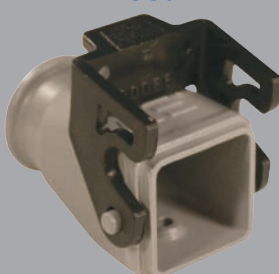
Component Parts

Bulkhead Housing



29013

Hood



29015
29015M

Surface Mount Housing



29014

FEMALE Insert

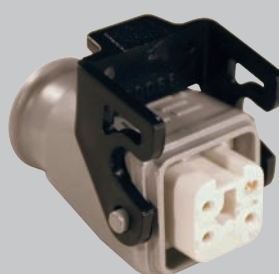


29008

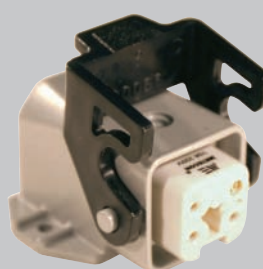
Pre-Assembled Units



403001



403004
403004M



403002

Covers



29640

Standard Part Numbers are
NPT threads.
Part numbers with an "M"
are metric thread.

MALE Insert



29009

Hood



29017
29017M



403005
403005M



29642



Connectors should not be coupled
and decoupled under electrical load.

Inserts

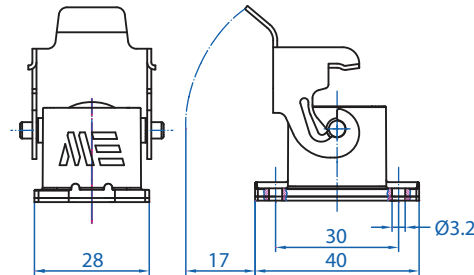
Number of contacts	3 Pole w/ ground
Electrical data to DIN EN61 984	10A 240V 6KV 3
Current	10A
Voltage	240V
Rated Impulse Voltage	6kV
Insulation Resistance	$\geq 10^{10} \Omega$
Temperature Range	-40 to 125°C
Flammability	UL94-V0

Contacts

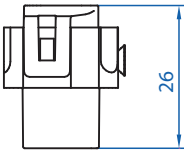
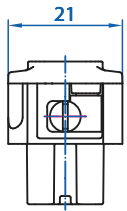
Screw terminal	
Material	Copper alloy
Surface plated	hard-silver
Contact resistance	$\leq 1m \Omega$
Wire size	2.5mm ² / 14 AWG
Torque	0.5Nm
Stripping Length	7.5mm

Metal Hoods & Housings

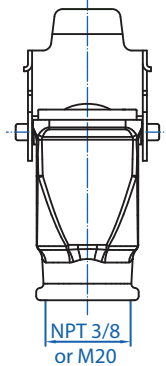
Material	Aluminum
Surface	Powder coated
Seals	NBR
Degree of Protection Acc To	IP65
DIN EN60529 for coupled connectors	
Thread Size	NPT 3/8" or M20



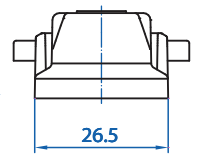
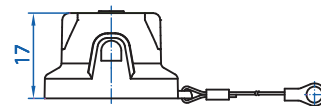
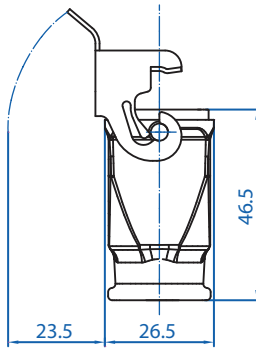
29013



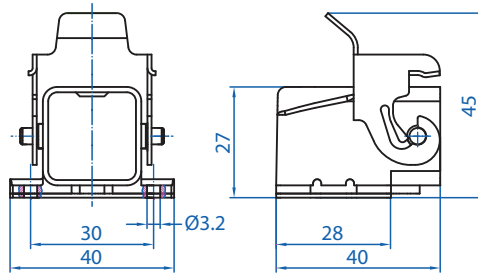
29008



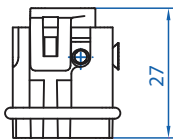
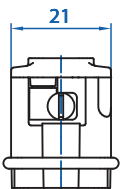
29015



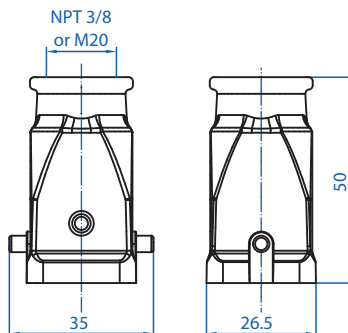
29640



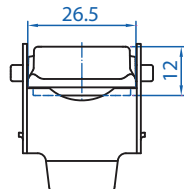
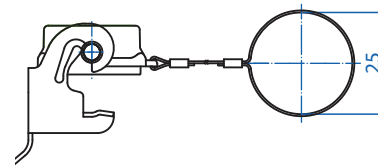
29014



29009



29017



29642

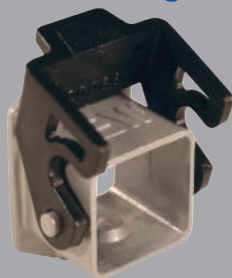


Connectors should not be coupled and decoupled under electrical load.

All dimensions are shown in millimeters.
To convert to inches divide by 25.4.

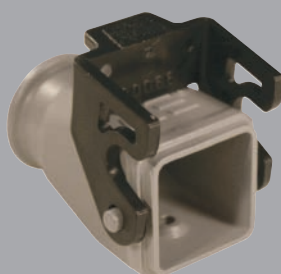
Component Parts

Bulkhead Housing



29013

Hood



29015
29015M

Surface Mount Housing

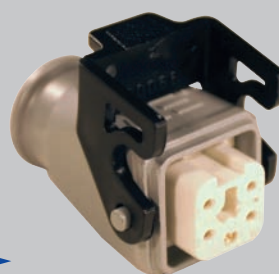


29014

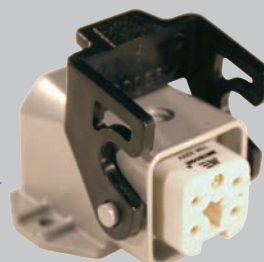
Pre-Assembled Units



403010



403015
403015M



403012

Covers



29640

FEMALE Insert



29010

MALE Insert



29011

Hood



29017
29017M



403017
403017M



29642

Standard Part Numbers are
NPT threads.
Part numbers with an "M"
are metric thread.



Connectors should not be coupled
and decoupled under electrical load.

Inserts

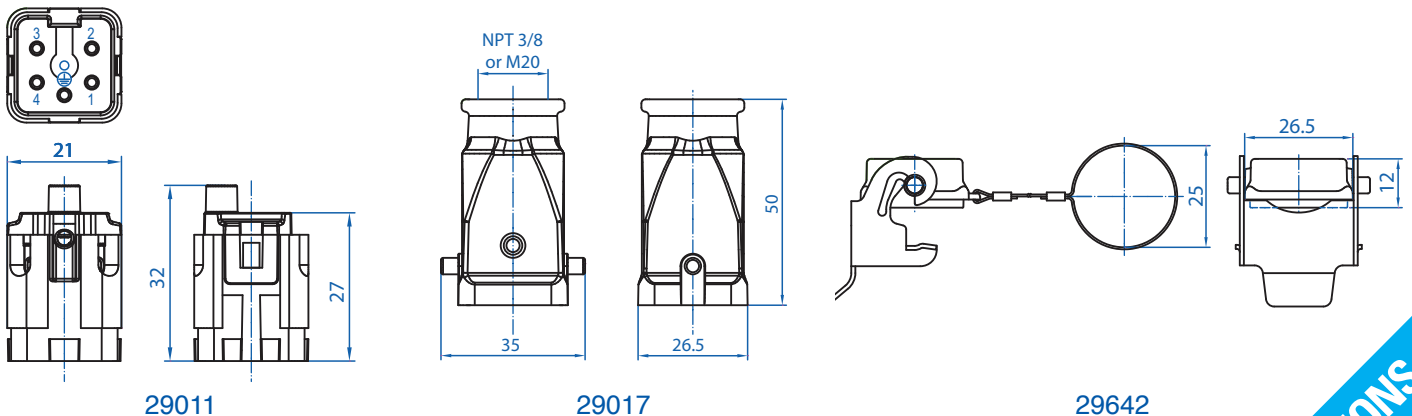
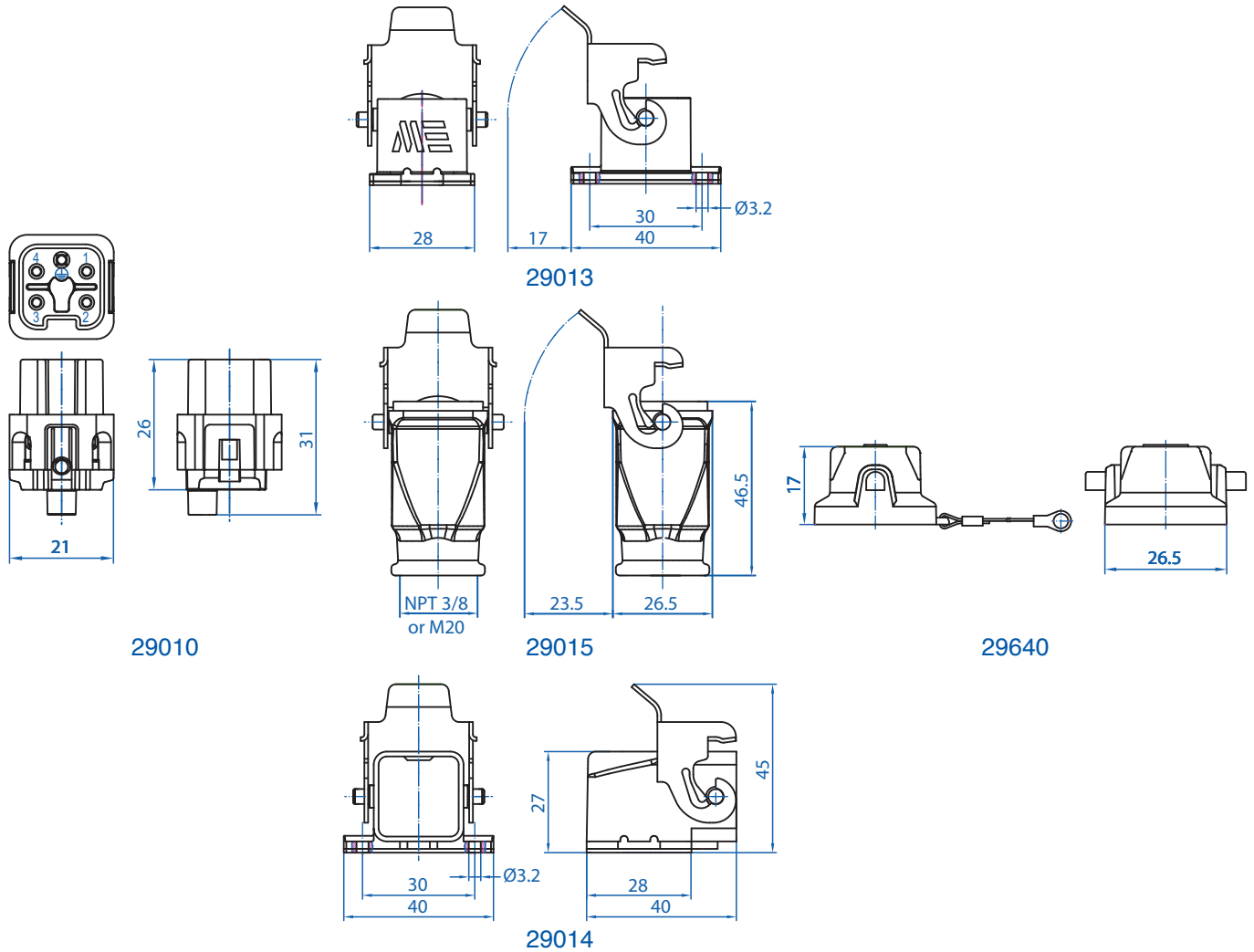
Number of contacts	4 Pole w/ ground
Electrical data to DIN EN61 984	10A 240V 6KV 3
Current	10A
Voltage	240V
Rated Impulse Voltage	6KV
Insulation Resistance	$\geq 10^{10} \Omega$
Temperature Range	-40 to 125°C
Flammability	UL94-V0

Contacts

Screw terminal	
Material	Copper alloy
Surface plated	hard-silver
Contact resistance	$\leq 1m \Omega$
Wire size	2.5mm ² / 14 AWG
Torque	0.5Nm
Stripping Length	7.5mm

Metal Hoods & Housings

Material	Aluminum
Surface	Powder coated
Seals	NBR
Degree of Protection Acc To	IP65
DIN EN60529 for coupled connectors	IP65
Thread Size	NPT 3/8" or M20



Connectors should not be coupled and decoupled under electrical load.

All dimensions are shown in millimeters.
To convert to inches divide by 25.4.

Component Parts

Bulkhead Housing



29130

Pre-Assembled Units



403090

FEMALE Insert



29120

Hood



29132
29132M

Surface Mount Housing



1 Hole
29133
29133M

2 Hole
29134
29134M



403095
403095M



1 Hole
403096
403096M

2 Hole
403098
403098M

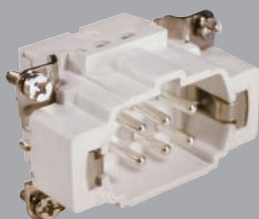
Standard Part Numbers
are NPT threads.
Part numbers with an "M"
are metric thread.

Covers



29644

MALE Insert



29121

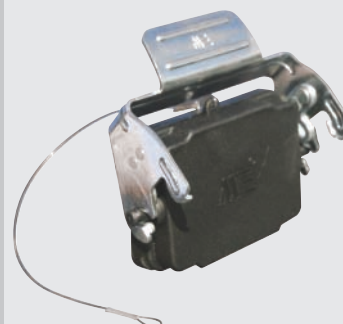
Hood



29131
29131M



403093
403093M



29646



Connectors should not be coupled
and decoupled under electrical load.

Inserts

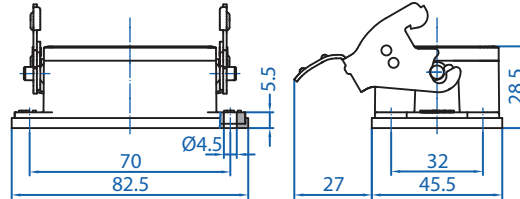
Number of contacts	6 Pole w/ ground
Electrical data to DIN EN61984	16A 400V 6KV 3
Current	16A
Voltage	400V
Rated Impulse Voltage	6KV
Insulation Resistance	$\geq 10^{10} \Omega$
Temperature Range	-40 to 125°C
Flammability	UL94-V0

Contacts

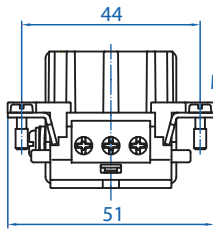
Screw terminal	
Material	Copper alloy
Surface plated	hard-silver
Contact resistance	$\leq 1m \Omega$
Wire size	2.5mm ² / 14 AWG
Torque	0.5Nm
Stripping Length	7.5mm

Metal Hoods & Housings

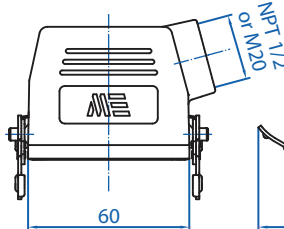
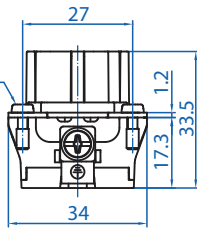
Material	Aluminum
Surface	Powder coated
Seals	NBR
Degree of Protection Acc To	
DIN EN60529 for coupled connectors	IP65
Thread Size	NPT 1/2" or M20



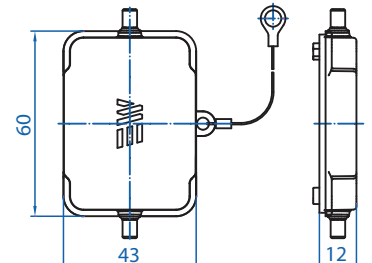
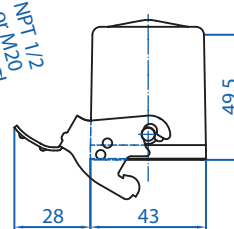
29130



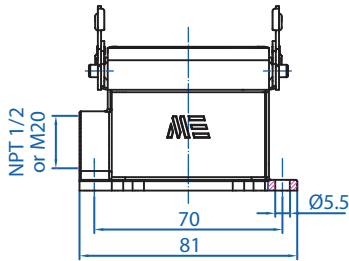
29120



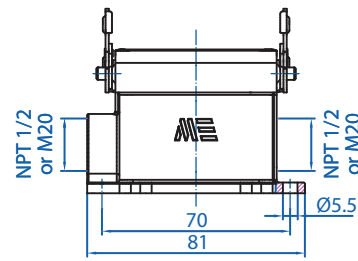
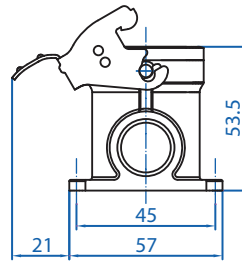
29132



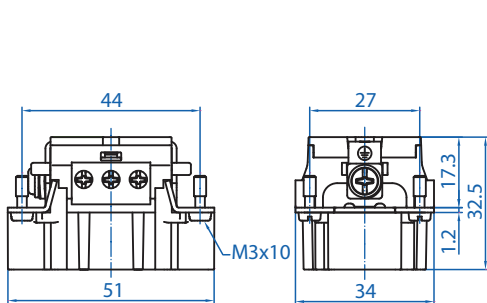
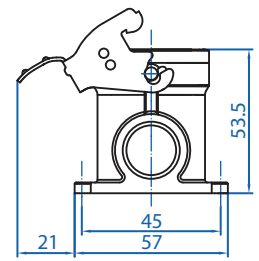
29644



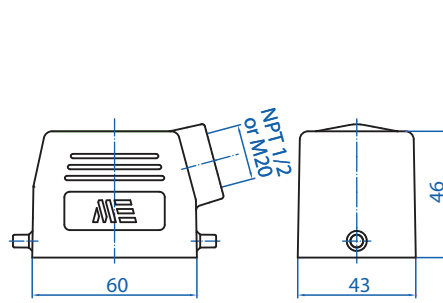
29133



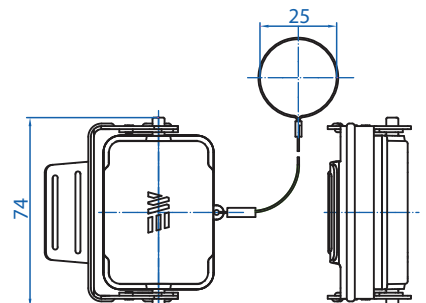
29134



29121



29131



29646



Connectors should not be coupled and decoupled under electrical load.

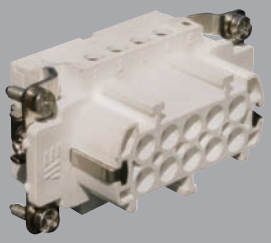
All dimensions are shown in millimeters.
To convert to inches divide by 25.4.

**Component
Parts**

Pre-Assembled Units

Covers

**FEMALE
Insert**



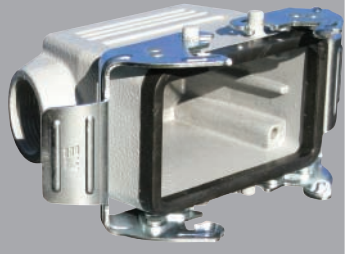
29020

Bulkhead Housing



29040

Hood



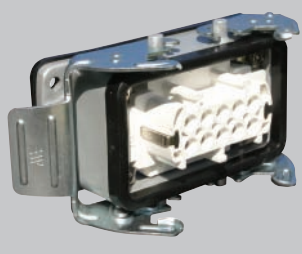
29049
29049M

**Surface Mount
Housing**

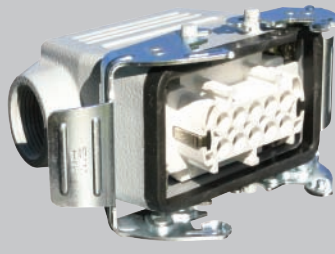


1 Hole
29054
29054M

2 Hole
29055
29055M



403020



403025
403025M



1 Hole
403026
403026M

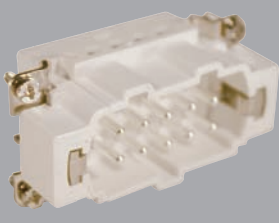
2 Hole
403028
403028M



29650

Standard Part Numbers are
NPT threads.
Part numbers with an "M"
are metric thread.

**MALE
Insert**



29021

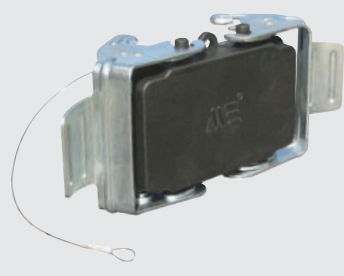
Hood



29041
29041M



403023
403023M



29653

Connectors should not be coupled
and decoupled under electrical load.

Inserts

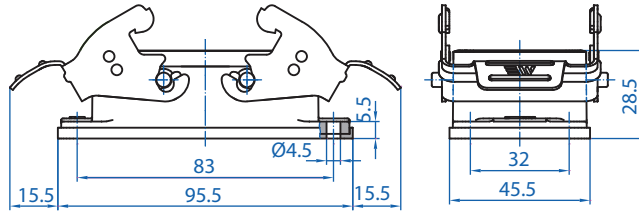
Number of contacts	10 Pole w/ ground
Electrical data to DIN EN61 984	16A 400V 6KV 3
Current	16A
Voltage	400V
Rated Impulse Voltage	6KV
Insulation Resistance	$\geq 10^{10} \Omega$
Temperature Range	-40 to 125°C
Flammability	UL94-V0

Contacts

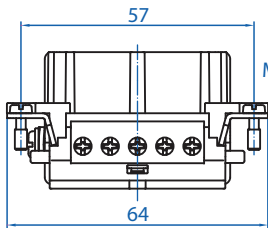
Screw terminal	
Material	Copper alloy
Surface plated	hard-silver
Contact resistance	$\leq 1m \Omega$
Wire size	2.5mm ² / 14 AWG
Torque	0.5Nm
Stripping Length	7.5mm

Metal Hoods & Housings

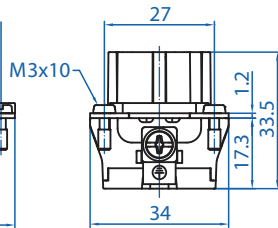
Material	Aluminum
Surface	Powder coated
Seals	NBR
Degree of Protection Acc To	IP65
DIN EN60529 for coupled connectors	IP65
Thread Size	NPT 1/2" or M25



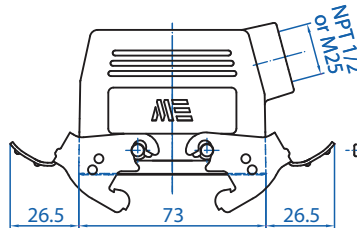
29040



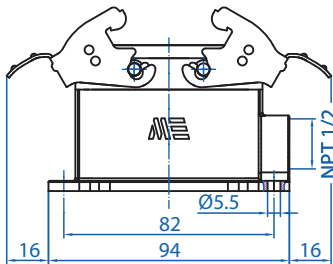
29020



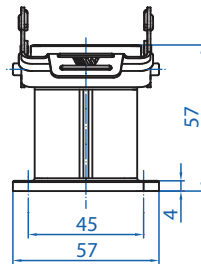
29049



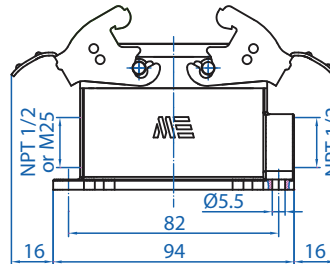
29650



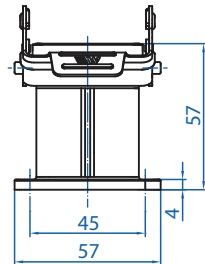
29054



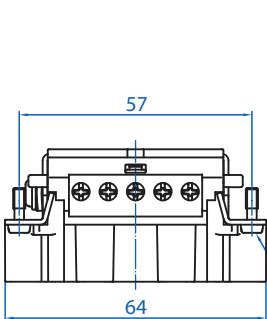
29055



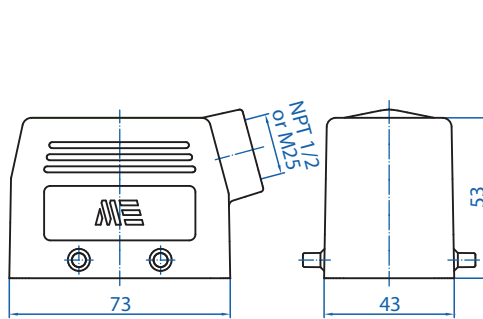
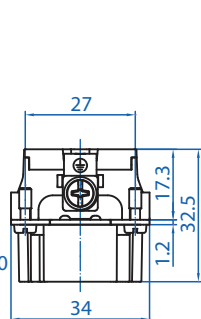
29041



29653



29021



Connectors should not be coupled and decoupled under electrical load.

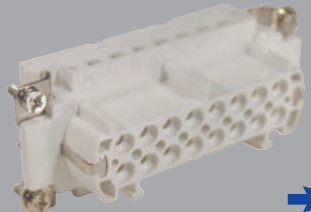
All dimensions are shown in millimeters.
To convert to inches divide by 25.4.

**Component
Parts**

Pre-Assembled Units

Covers

**FEMALE
Insert**



29022

Bulkhead Housing



29042

Hood

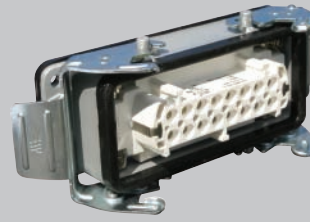


29050
29050M

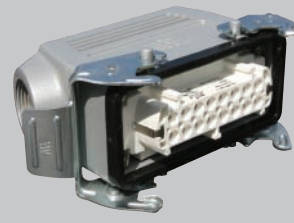
**Surface Mount
Housing**



1 Hole 29056 29056M
2 Hole 29057 29057M



403030



403035
403035M



1 Hole 403036 403036M
2 Hole 403038 403038M



29651

Standard Part Numbers are
NPT threads.
Part numbers with an "M"
are metric thread.

**MALE
Insert**



29023

Hood



29043
29043M



403033
403033M



29654



Connectors should not be coupled
and decoupled under electrical load.

Inserts

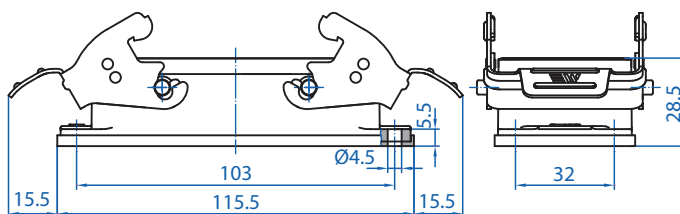
Number of contacts	16 Pole w/ ground
Electrical data to DIN EN61 984	16A 400V 6KV 3
Current	16A
Voltage	400V
Rated Impulse Voltage	6KV
Insulation Resistance	$\geq 10^{10} \Omega$
Temperature Range	-40 to 125°C
Flammability	UL94-V0

Contacts

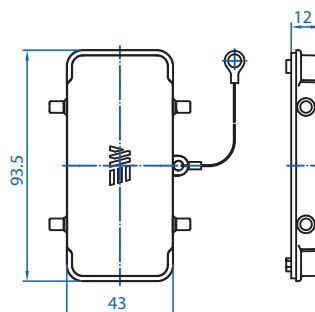
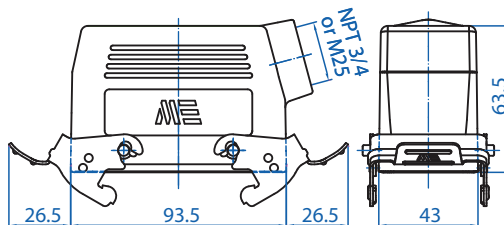
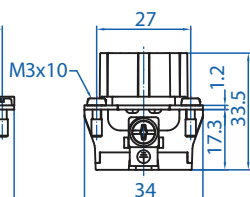
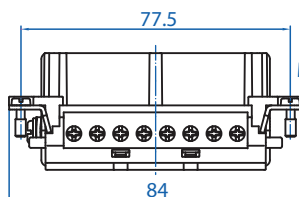
Screw terminal	
Material	Copper alloy
Surface plated	hard-silver
Contact resistance	$\leq 1\text{m}\Omega$
Wire size	2.5mm ² / 14 AWG
Torque	0.5Nm
Stripping Length	7.5mm

Metal Hoods & Housings

Material	Aluminum
Surface	Powder coated
Seals	NBR
Degree of Protection Acc To	
DIN EN60529 for coupled connectors	IP65
Thread Size	NPT 3/4" or M25



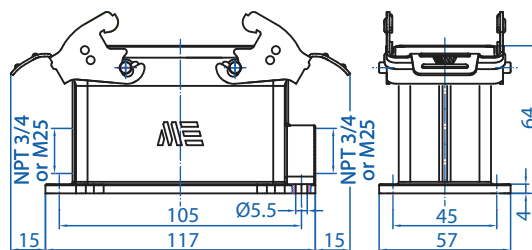
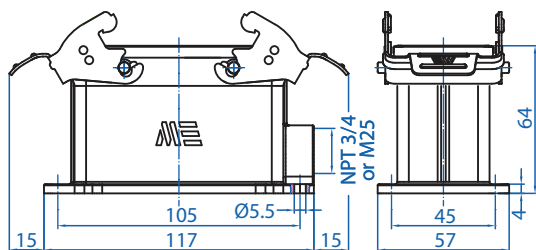
29042



29022

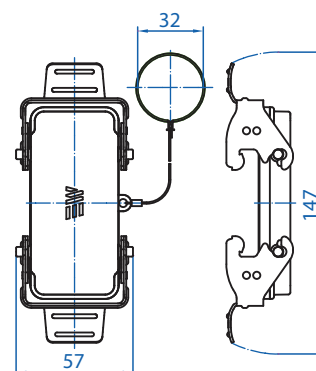
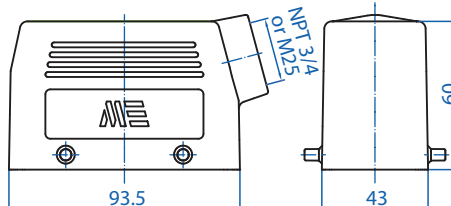
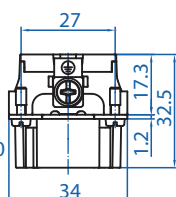
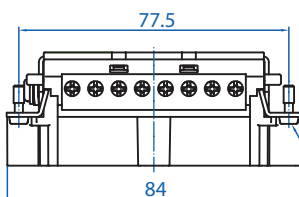
29050

29651



29056

29057



29023

29043

29654



Connectors should not be coupled and decoupled under electrical load.

*All dimensions are shown in millimeters.
To convert to inches divide by 25.4.*

**24 Pole
with Ground**

PROTECTION
IP65
RATING

CE

UL
E307105

**Component
Parts**

Pre-Assembled Units

Covers

FEMALE

Insert



29024

Bulkhead Housing



29044

Hood

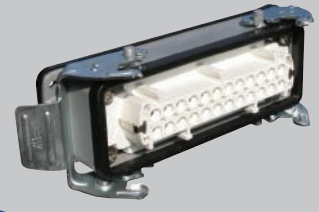


29051
29051M

**Surface Mount
Housing**



1 Hole	2 Hole
29058	29059
29058M	29059M



403040



403045
403045M



1 Hole	2 Hole
403046	403048
403046M	403048M

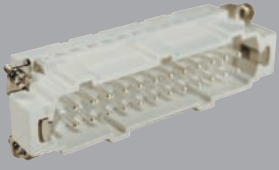


29652

Standard Part Numbers are
NPT threads.
Part numbers with an "M"
are metric thread.

MALE

Insert



29025

Hood



29045
29045M



403043
403043M



29655



Connectors should not be coupled
and decoupled under electrical load.

Inserts

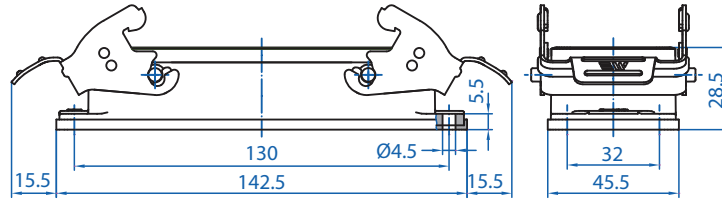
Number of contacts	24 Pole w/ ground
Electrical data to DIN EN61 984	16A 400V 6KV 3
Current	16A
Voltage	400V
Rated Impulse Voltage	6KV
Insulation Resistance	$\geq 10^{10} \Omega$
Temperature Range	-40 to 125°C
Flammability	UL94-V0

Contacts

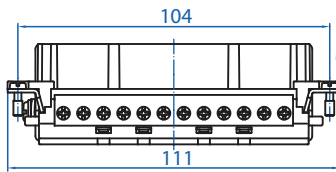
Screw terminal	
Material	Copper alloy
Surface plated	hard-silver
Contact resistance	$\leq 1m \Omega$
Wire size	2.5mm ² / 14 AWG
Torque	0.5Nm
Stripping Length	7.5mm

Metal Hoods & Housings

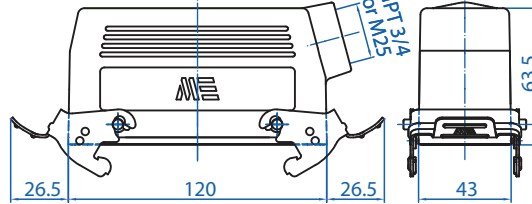
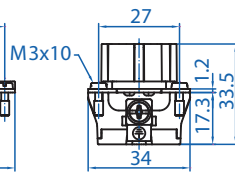
Material	Aluminum
Surface	Powder coated
Seals	NBR
Degree of Protection Acc To	
DIN EN60529 for coupled connectors	IP65
Thread Size	NPT 3/4" or M25



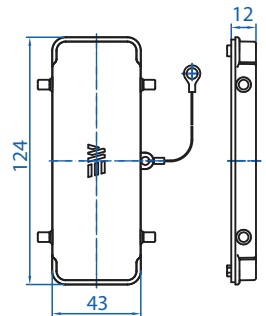
29044



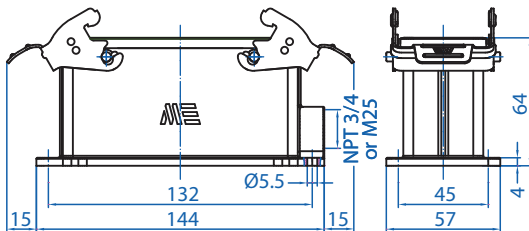
29024



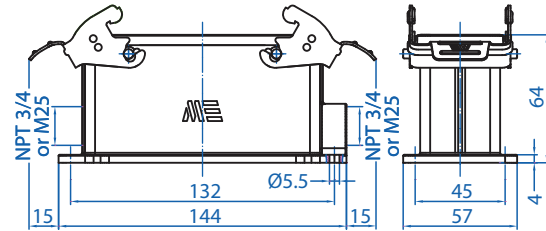
29051



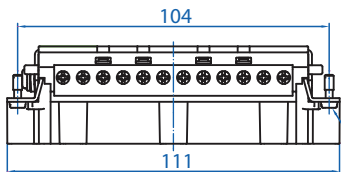
29652



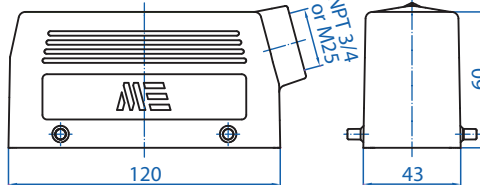
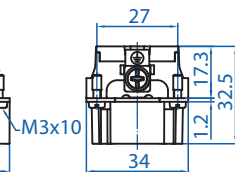
29058



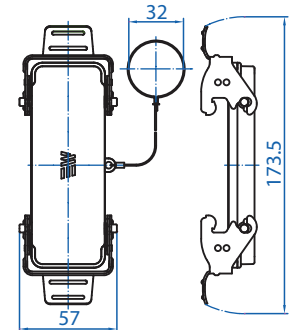
29059



29025



29045



29655



Connectors should not be coupled and decoupled under electrical load.

All dimensions are shown in millimeters.
To convert to inches divide by 25.4.

Component Parts

Pre-Assembled Units

Covers

Bulkhead Housing

FEMALE

29022
(1-16)

Insert



29026
(17-32)



29046

Hood



403050



29660

Standard Part Numbers are
NPT threads.
Part numbers with an "M"
are metric thread.

Top Entry
29062
29062M

Side Entry
29063
29063M

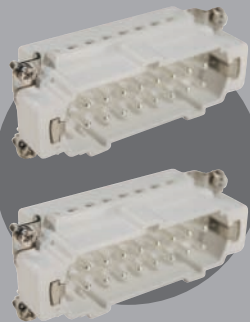
Top Entry
403056
403056M

Side Entry
403057
403057M

MALE

29023
(1-16)

Insert



29027
(17-32)

Hood



29662

Top Entry
29060
29060M

Side Entry
29061
29061M

Top Entry
403054
403054M

Side Entry
403055
403055M



Connectors should not be coupled
and decoupled under electrical load.

Inserts

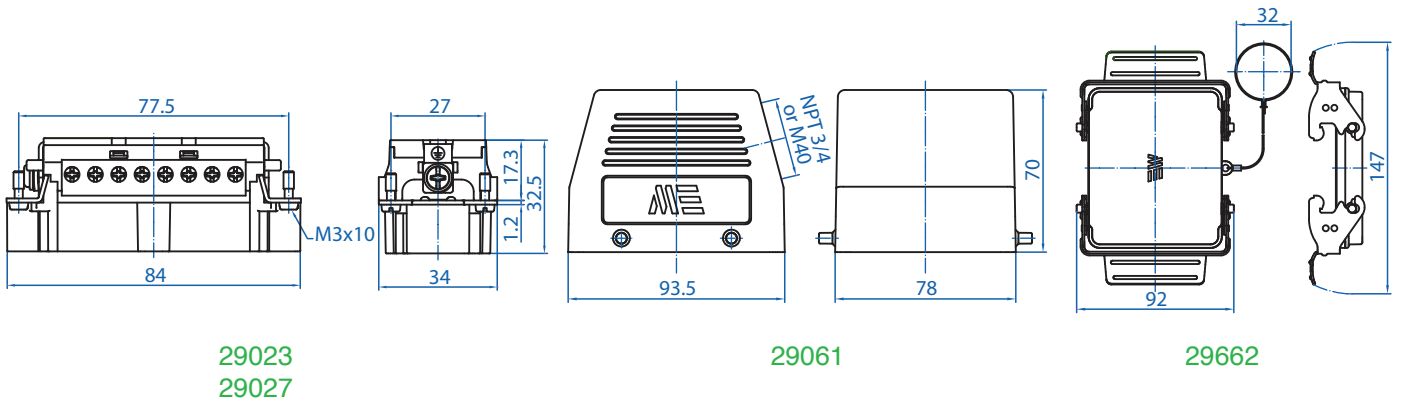
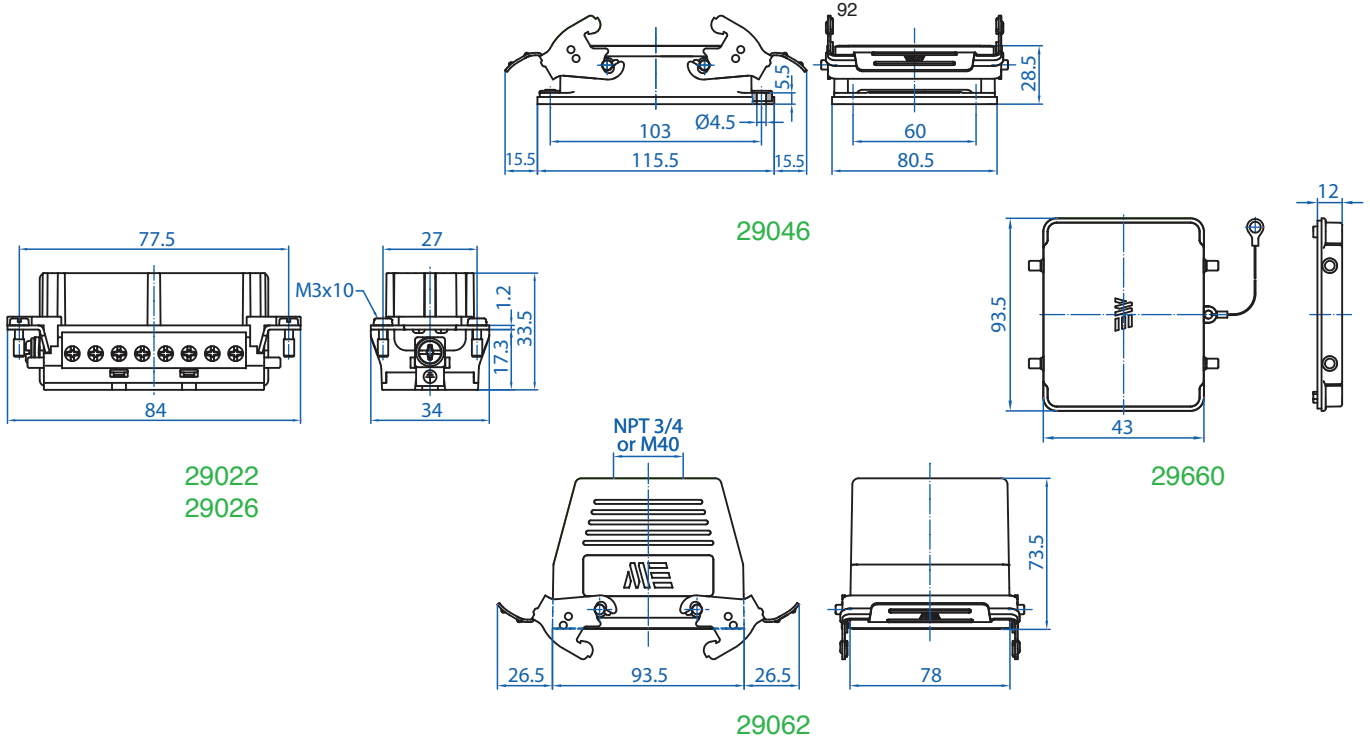
Number of contacts	32 Pole w/ ground
Electrical data to DIN EN61 984	16A 400V 6KV 3
Current	16A
Voltage	400V
Rated Impulse Voltage	6KV
Insulation Resistance	$\geq 10^{10} \Omega$
Temperature Range	-40 to 125°C
Flammability	UL94-V0

Contacts

Screw terminal	
Material	Copper alloy
Surface plated	hard-silver
Contact resistance	$\leq 1m \Omega$
Wire size	2.5mm ² / 14 AWG
Torque	0.5Nm
Stripping Length	7.5mm

Metal Hoods & Housings

Material	Aluminum
Surface	Powder coated
Seals	NBR
Degree of Protection Acc To	
DIN EN60529 for coupled connectors	IP65
Thread Size	NPT 3/4" or M40



Connectors should not be coupled and decoupled under electrical load.

All dimensions are shown in millimeters.
To convert to inches divide by 25.4.

**48 Pole
with Ground**

PROTECTION
IP65
RATING



**Component
Parts**

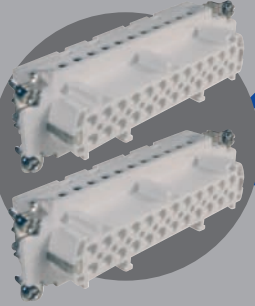
Pre-Assembled Units

Covers

FEMALE

Insert

29024
(1-24)



29028
(25-48)

Bulkhead Housing



29048

Hood



Top Entry
29067
29067M

Side Entry
29068
29068M



403060



Top Entry
403066
403066M

Side Entry
403067
403067M



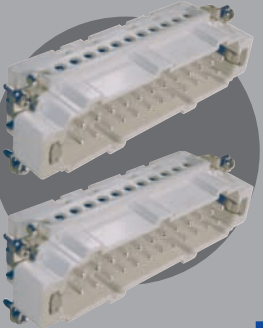
29661

Standard Part Numbers are
NPT threads.
Part numbers with an "M"
are metric thread.

MALE

Insert

29025
(1-24)



29029
(25-48)

Hood



Top Entry
29065
29065M

Side Entry
29066
29066M



Top Entry
403064
403064M

Side Entry
403065
403065M



29663



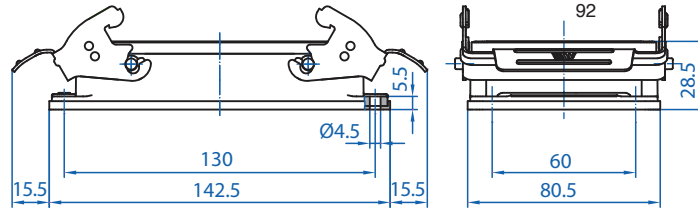
Connectors should not be coupled
and decoupled under electrical load.

Inserts

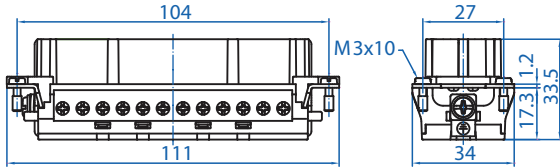
Number of contacts	48 Pole w/ ground
Electrical data to DIN EN61 984	16A 400V 6KV 3
Current	16A
Voltage	400V
Rated Impulse Voltage	6KV
Insulation Resistance	$\geq 10^{10} \Omega$
Temperature Range	-40 to 125°C
Flammability	UL94-V0

Contacts

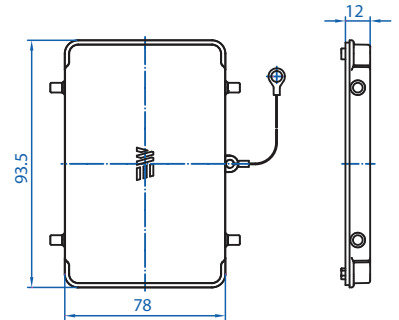
Screw terminal	
Material	Copper alloy
Surface plated	hard-silver
Contact resistance	$\leq 1m \Omega$
Wire size	2.5mm ² / 14 AWG
Torque	0.5Nm
Stripping Length	7.5mm



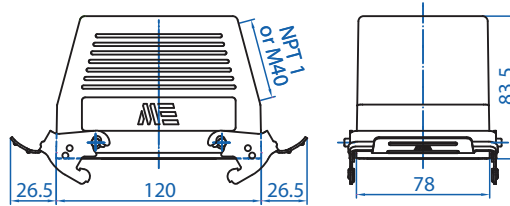
29048



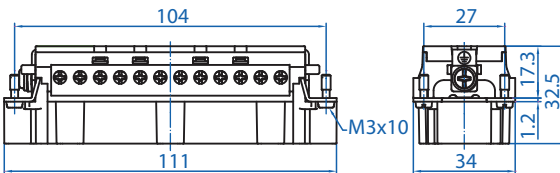
29024
29028



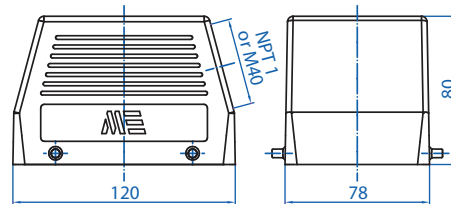
29661



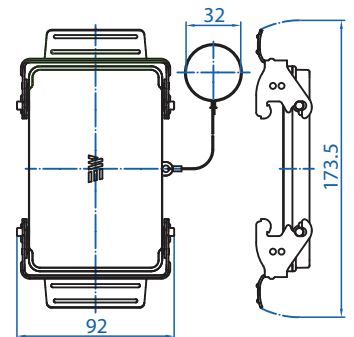
29068



29025
29029



29066



29663



Connectors should not be coupled
and decoupled under electrical load.

*All dimensions are shown in millimeters.
To convert to inches divide by 25.4.*

Strain Relief/ Cable Gland, Polyamide

Material:

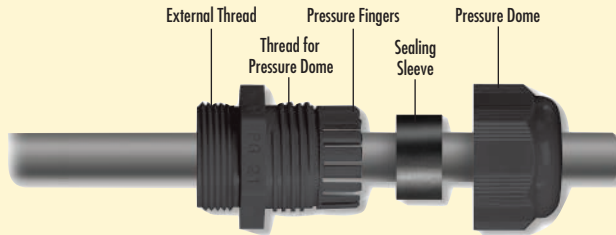
- Body: Polyamide 6
- Seal: Neoprene

Technical properties:

- Maximum strain relief through clamping range
- IP68 achieved without seal rings (metric only)
- Trapezoidal thread with high torque guarantees tight and permanent fit of the dome nut
- Gas- and watertight

Applications:

- Machines and devices



Temperature Range	
PA6	Neoprene
-25 to 100°C (-13 to 212°F)	-25 to 100°C (-13 to 212°F)



Metric Only



UL US
E184471

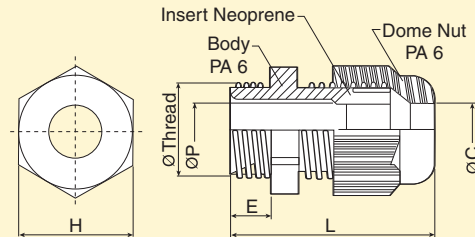
NPT Thread

Outer thread	Clamping range mm	Cat. No. Black	Std. Pk.
NPT 3/8"	1.5-6	5308924	50
NPT 3/8"	2.5-8	5308920	50
NPT 1/2"	3-9	5308925	50
NPT 1/2"	5-12	5308921	50
NPT 3/4"	7-16	5308926	20
NPT 3/4"	9-18	5308922	20
NPT 1"	11-21	5308927	20
NPT 1"	14-25	5308923	20

Thread Size	H mm	E mm	Dimensions			
			L mm	ØC mm	ØP mm	ØThread mm
NPT 3/8	19	11	38	8.5	8.7	17.1
NPT 1/2	24	14	44	12.5	12.5	21.2
NPT 3/4	33	15	54	18.5	18.5	26.7
NPT 1	42	18	60	25.5	25.5	33.3
M20x1.5/13	24	10	40	12.5	12.5	20.0
M20x1.5/16	27	10	43	14.5	14.5	20.0
M25x1.5/16	27	10	45	14.5	14.5	25.0
M25x1.5/21	33	10	49	18.5	18.5	25.0
M40x1.5	53	10	62	32.5	32.5	40.0

Metric Thread*

M 20 x 1.5/13	3-9	5309719	50
M 20 x 1.5/16	5-12	5309720	50
M 20 x 1.5/13	5-12	5308949	50
M 20 x 1.5/16	7-14	5308942	50
M 25 x 1.5/16	5-12	5309724	50
M 25 x 1.5/21	7-16	5309725	25
M 25 x 1.5/16	7-14	5308962	50
M 25 x 1.5/21	9-18	5308943	25
M 40 x 1.5	13-26	5309740	10
M 40 x 1.5	18-32	5308945	10



* Extended thread available consult Altech

Cable Gland, with Traction Relief and Kink Protection, Polyamide

Material:

- Body: Polyamide 6
- Seal: Neoprene

Characteristics:

Metric/NPT threads
Metric extended thread available

Technical properties:

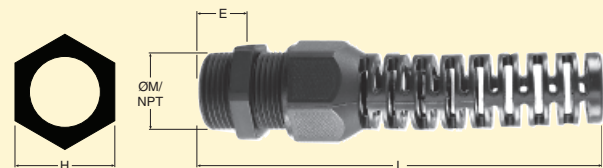
- Optimal strain relief through clamping range
- Seals against housing through sealing lip
- Trapezoidal threading with high torque guarantees tight and

- permanent fit of the dome nut
- Also available with reduction insert
- Gas- and watertight

- Applications:
- Machines and devices



Temperature Range PA
-20 to 100°C (-4 to 212°F)



Outer thread	Clamping range (mm)	Cat. No. Dark Grey	Cat. No. Black	Std. Pk.
Metric				
M 20 x 1.5	3 - 7	5306032	5306132	50
M 20 x 1.5	5.5 - 12	5306033	5306133	50
NPT				
NPT 3/8"	3 - 8	5306050	5306150	50
NPT 1/2"	3 - 7	5306051	5306151	50
NPT 1/2"	5.5 - 12	5306052	5306152	50

Thread Size	Dimensions			Thread mm
	H mm	E mm	L mm	
M 20x1.5	24	8	96	20
NPT 3/8"	19/22	15	79	17.1
NPT 1/2"	24	15	103	21.2

Sealing Ring



Outer thread	Cat. No.
NPT 3/8"	8113303
NPT 1/2"	8113305
NPT 3/4"	8113306
NPT 1"	8113307

Outer thread	Cat. No.
M20	8113492
M25	8113493
M40	8113495

Strain Relief/ Cable Gland, Nickel-Plated Brass

Material:

- Body: Nickel-plated brass
- Seal: Neoprene
- Clamping insert: Polyamide 6
- Sealing ring for outer thread: Nitril

Technical properties:

- Seal rings included for Metric sizes only
- Maximum strain relief through clamp range
- Gas and watertight



Temperature Range
Neoprene
-25 to 100°C
(-13 to 212°F)



NPT Thread

Outer thread	Clamping range mm	Cat. No.	Std. Pk.
NPT 3/8"	2.5-7	4220810	50
NPT 3/8"	4-9.5	4220800	50
NPT 1/2"	4-10	4220811	50
NPT 1/2"	7-13	4220801	50
NPT 3/4"	5-13	4220812	20
NPT 3/4"	8-16	4220802	20
NPT 1"	7-17	4220813	5
NPT 1"	11-21	4220803	5

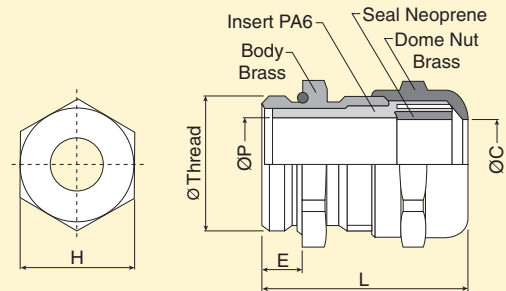
Metric Thread*

M 20 x 1.5	4-10	4220720	50
M 20 x 1.5	7-13	4220620	50
M 25 x 1.5	5-13	4220725	25
M 25 x 1.5	8-16	4220625	25
M 40 x 1.5	10-22	4220740	10
M 40 x 1.5	15-27	4220640	10

* Extended thread available consult Altech

Dimensions

Thread Size	H mm	E mm	L mm	ØC mm	ØP mm	ØThread mm
NPT 3/8	18	15	38	9.7	10	17.1
NPT 1/2	23	20	46	13.2	13.5	21.2
NPT 3/4	28	20	48	16.2	16.5	26.7
NPT 1	36	25	55	21.5	22	33.3
M20x1.5	22	6	32	13.2	13.5	20.0
M25x1.5	27	7	35	16.2	16.5	25.0
M40x1.5	42	8	41	27.5	28	40.0



POLYFLEX®, PA 6 normal profile conduit

Material:

- Polyamide 6

Upper temperature range:

- Short-term: 150°C, (302°F)

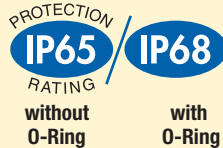
Characteristics:

- Parallel corrugated
- Gray available

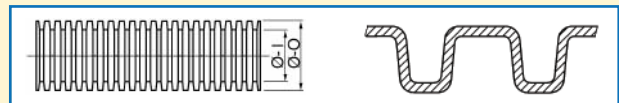
Technical properties:

- Flame retardant according to FMVSS302 and UL94
- Halogen free
- Durable
- UV resistant according to DIN EN ISO 8580

Applications:
Engine compartment, car body and interior, machines, instruments, devices, ship and train building, switch cabinet and movable machine parts.



Temperature Range PA 6
-40 to 120°C (-40 to 248°F)



Cat. No. Tube	Ø-1 (mm)	Ø-2 (mm)	Std. Pk. (meters)	Cat. No. Mounting Clip	Cat. No. O-Ring	Cat. No. Straight Connector	Cat. No. 90° Angled Connector	Thread Size	Cat. No. Sealing Ring
1200178	16.6	21.2	50	8221054	8112807	3805002	3805211	M20	8113492
1200232	23.2	28.3	50	8221055	8112809	3805013	3805217	M25	8113493
1200372	36.0	42.4	25	8221057	8112811	3805017	3805229	M40	8113495



Conduit



Mounting Clip



O-Ring



Straight Connector



90° Angled Connector



Sealing Ring

Index

Part No.	Page	Part No.	Page	Part No.	Page
1200178	23	29120	10	3805017	23
1200232	23	29121	10	3805211	23
1200372	23	29130	10	3805217	23
29008	6	29131	10	3805229	23
29009	6	29133	10	403001	6
29010	8	29134	10	403002	6
29011	8	29640	6, 8	403004	6
29013	6, 8	29642	6, 8	403005	6
29014	6, 8	29644	10	403010	8
29015	6, 8	29646	10	403012	8
29017	6, 8	29650	12	403015	8
29020	12	29651	14	403017	8
29021	12	29652	16	403021	12
29022	14, 18	29653	12	403023	12, 14
29023	14, 18	29654	14	403026	12
29024	16, 20	29655	16	403028	12
29025	16, 20	29660	18	403030	14
29026	18	29661	20	403036	14
29027	18	29662	18	403036	14
29028	20	29663	20	403038	14
29029	20	29015M	6, 8	403040	16
29040	12	29017M	6, 8	403043	16
29041	12	29041M	12	403046	16
29042	14	29043M	14	403048	16
29043	14	29045M	16	403050	18
29044	16	29054M	12	403051	18
29045	16	29055M	12	403054	18
29046	18	29056M	14	403055	18
29048	20	29057M	14	403056	18
29054	12	29058M	16	403057	18
29055	12	29059M	16	403060	20
29056	14	29060M	18	403064	20
29057	14	29061M	18	403065	20
29058	16	29062M	18	403066	20
29058	16	29063M	18	403067	20
29059	16	29065M	20	403090	10
29060	18	29066M	20	403093	10
29061	18	29067M	20	403096	10
29062	18	29068M	20	403096	10
29063	18	29131M	10	403098	10
29065	20	29133M	10	403004M	6
29066	20	29134M	10	403005M	6
29067	20	3805002	23	403015M	8
29068	20	3805013	23	403017M	8

Index

Part No.	Page	Part No.	Page	Part No.	Page
403023M	12, 14	5308921	22	8113307	22
403026M	12	5308922	22	8113492	23
403028M	12	5308923	22	8113493	23
403036M	14	5308924	22	8113495	23
403038M	14	5308925	22	8221054	23
403043M	16	5308926	22	8221055	23
403046M	16	5308927	22	8221057	23
403048M	16	5308942	22		
403054M	18	5308943	22		
403055M	18	5308945	22		
403056M	18	5308949	22		
403057M	18	5308962	22		
403064M	20	5309719	22		
403065M	20	5309720	22		
403066M	20	5309724	22		
403067M	20	5309725	22		
403093M	10	5309740	22		
403096M	10	8112807	23		
403098M	10	8112809	23		
4220620	23	8112811	23		
4220625	23	8113303	22		
4220640	23	8113305	22		
4220720	23	8113306	22		
4220725	23				
4220740	23				
4220800	23				
4220801	23				
4220802	23				
4220803	23				
4220810	23				
4220811	23				
4220812	23				
4220813	23				
5306032	22				
5306033	22				
5306050	22				
5306051	22				
5306052	22				
5306132	22				
5306133	22				
5306150	22				
5306151	22				
5306152	22				
5308920	22				



Industrial Rectangular Connector in a typical application scenario.

STANDARD TERMS AND CONDITIONS OF SALE

TITLE - Title to the products of ALTECH shall remain with ALTECH until payment is made in full by Customer. Such reservation of title is for the purpose of securing the purchase price and shall not relieve Customer of the duty to inspect the products upon receipt, to notify ALTECH of any deficiencies or defects, and to exercise due care in the use, installation, operation, and maintenance of the products when on the premise of the Customer or under the control of the Customer. Notwithstanding any reservation of title by ALTECH, risk of loss shall pass to customer at any time of shipment.

SHIPMENT AND DELIVERY - All orders for destination in the mainland United States (less Hawaii, Alaska and non-continental United States possessions) will be shipped F.O.B. Flemington, N.J. All destination, shipping and other charges shall be paid by the Customer in accordance with ALTECH's then current shipping and billing practices.

Delivery dates given in the acceptance of any order are approximate. ALTECH shall not be liable for delays in delivery or in performance due to causes beyond its reasonable control including acts of God, acts of Customer, acts of civil or military authority, fires, strikes or other labor disturbances, war, riot or delays in transportation. In the event of such delay, the date of delivery or performance shall be extended for a period equal to the time lost by reason of the delay.

PRICE - PRICES in any ALTECH publication are subject to change without prior notification. Catalog prices are based on prices published in the current price list. All written quotations are valid for thirty (30) days from the date of quotation. Customer shall pay all sales, use, excise or similar taxes whenever ALTECH must itself pay and/or collect such tax from Customer arising out of the sale.

PAYMENT - Customer agrees to make payment within thirty (30) days of date of the invoice from ALTECH. Customer agrees to pay a late payment charge of one and one-half percent (1.5% per month, or the maximum late payment charge permitted by applicable law, whichever is less, on any unpaid amount for each calendar month (or fraction thereof) that such payment is in default. Orders amounting to less than \$100.00 will be billed at \$100.00 plus freight. Full carton purchases are required. In the event of referral to an attorney for collection, reasonable attorney's fees for collection of the overdue amount shall be paid by Customer. In the event payment is not received within 30 days from the date of invoice, any discount shall be cancelled and the full list price will be due.

LIMITED WARRANTY - ALTECH warrants to Customer that the equipment purchases shall be free from defects in material and workmanship under normal use and service for a period of one year from shipment.

Written notice as an explanation of the circumstances of any claim that the equipment has proved defective in material or workmanship shall be given promptly by the Customer to ALTECH.

ALTECH will not be liable for any misuse, improper operations, improper installation, improper maintenance, alteration, modification, accident or unusual degradation of the equipment or parts due to an unsuitable installation environment.

No representation of other affirmation of facts, including but not limited to statements regarding capacity, suitability for use or performance of the equipment, shall be or be deemed to be a warranty or representation by ALTECH for any purpose, nor give rise to any liability or obligation of ALTECH whatsoever.

Customer's sole and exclusive remedy in the event of breach of warranty, as set forth herein, is expressly limited to (1) the correction of the defect by adjustment, repair, modification, or replacement, or (2) issuance of a credit or refund of the purchase price for the defective equipment at ALTECH's election and sole expense.

EXCEPT AS SPECIFICALLY PROVIDED IN THIS AGREEMENT, THERE ARE NO OTHER WARRANTIES EXPRESSED OR IMPLIED INCLUDING BUT NOT LIMITED TO ANY IMPLIED WARRANTIES OR MERCHANTABILITY OR FITNESS FOR A PARTICULAR PURPOSE.

THIS WARRANTY EXTENDS ONLY TO THE CUSTOMER FROM ALTECH OR ITS AUTHORIZED DISTRIBUTOR.

LIMITATION OF LIABILITY - IN NO EVENT, SHALL ALTECH BE LIABLE FOR LOSS OF PROFITS, INDIRECT, SPECIAL, CONSEQUENTIAL OR OTHER SIMILAR DAMAGES ARISING OUT OF ANY BREACH OF THIS AGREEMENT OR OBLIGATIONS UNDER THE AGREEMENT.

ALTECH SHALL NOT BE LIABLE FOR ANY DAMAGES CAUSED BY DELAY IN SHIPMENT, INSTALLATION OR FURNISHING OF EQUIPMENT OR SERVICES UNDER THIS AGREEMENT.

No action arising out of any claimed breach of this Agreement may be brought by either party more than two (2) years after the cause of action has accrued.

PATENT INDEMNITY - ALTECH shall defend or settle any suit or proceeding brought against Customer based on a claim that any equipment made to ALTECH design and furnished hereunder constitutes an infringement of any existing United States patent, provided (ALTECH) is notified promptly in writing and is given complete authorization and information required for the defense, and ALTECH shall pay all damages and costs awarded against Customer, but shall not be responsible for any costs, expense or compromise incurred or made by Customer without ALTECH's prior written consent. If any equipment is in ALTECH's opinion likely to or does become the subject of a claim for patent infringement, ALTECH may at its option and expense procure for Customer the right to continue using the device, modify it to become non-infringing, but in the event ALTECH is not reasonably able to modify, substitute, or otherwise procure for Customer the right to continue using it, ALTECH will remove such equipment and refund to Customer the amount paid in excess of a reasonable rental for past use.

ALTECH shall not be liable for any infringement or claim based upon use of the equipment in combination with other equipment not supplied by ALTECH or with modifications made by Customer.

The foregoing states the entire liability of ALTECH to Customer arising from patent infringement.

SELLER'S REMEDIES - Should Customer fail to make any payment within ten (10) days of its due date, or fail to perform any other of the Customer's obligation hereunder upon thirty (30) days written notice, or should Customer be or become insolvent or be a party to any bankruptcy receivership proceeding prior to full payment of all amounts payable hereunder, ALTECH may: (a) with or without demand or notice to customer declare the entire amount unpaid immediately due and payable; (b) enter upon the premises where the equipment may be found and remove it (Customer shall assemble the equipment and make it available to ALTECH at a place reasonably convenient to both parties and shall permit and assist ALTECH in effecting the retaking and removal of the equipment); and (c) sell any or all the equipment as permitted under applicable law, applying the proceeds of the sale to payment of the expenses of retaking, repairing and selling the equipment, reasonable attorney fees and to the satisfaction of all indebtedness then due and unpaid under this Agreement. Any surplus shall be paid to Customer and any deficiency shall be paid to ALTECH by Customer.

The remedies provided herein shall be cumulative and in addition to all other remedies provided by law or equity or under the Uniform Commercial Code.

GOVERNING LAW - This agreement will be governed by the Laws of the State of New Jersey.

GENERAL - This Agreement shall only become effective and binding when either (a) it has been accepted and executed by an authorized representative of ALTECH, or (b) the equipment has been shipped to Customer, with or without acceptance in writing hereon. Notice of acceptance is hereby waived by Customer. Customer hereby acknowledges receipt of a true and complete copy hereof.

No addition to or modification of any of the Terms and Conditions of Sale as they appear herein shall be binding upon ALTECH unless signed in writing by duly authorized representative of ALTECH in Flemington, N.J.

Typographical and clerical errors in quotations, orders and acknowledgments are subject to correction.

This Agreement is not assignable without the prior written consent of ALTECH. Any attempt to assign any of the rights, duties or obligations of this Agreement without such consent is void.

If any provision or provisions of this Agreement shall be held to be invalid, illegal or unenforceable, the validity, legality and enforceability, of the remaining provisions shall not in any way be affected or impaired thereby.

ALTECH is not responsible for failure to fulfill its obligation under this Agreement due to causes beyond its control, or except as agreed herein.

THE CUSTOMER ACKNOWLEDGES THAT HE HAS READ THE AGREEMENT, UNDERSTANDS IT, AND AGREES TO BE BOUND BY ITS TERMS AND CONDITIONS. FURTHERMORE, THE CUSTOMER AGREES THAT IT IS THE COMPLETE AND EXCLUSIVE STATEMENT OF THE AGREEMENT BETWEEN THE PARTIES, WHICH SUPERSEDES ALL PROPOSALS OR PRIOR AGREEMENTS, ORAL OR WRITTEN, EXPRESSED OR IMPLIED, AND ALL OTHER COMMUNICATIONS BETWEEN THE PARTIES RELATING TO THE SUBJECT MATTER OF THIS AGREEMENT.

Here are other great catalogs available from Altech!

Contactors and More!



Altech's now carries contactors, mini contactors, definite purpose contactors & overload relays. The contactors come in 3 and 4 pole configurations at 9A to 800A. Available in Single Phase (115 - 230V) and Three Phase (200 - 575V) AC and DC models. A large variety of coil voltages are supported and the accessories are auxiliary contacts and overload relays. The mini contactors come in screw clamp, fast-on, cage clamp and solder pin types.

Altech Corp.®
35 Royal Rd., Flemington, NJ 08822
908-806-9400
www.altechcorp.com

Motor Disconnect Switches



Altech's line of Motor Disconnect Switches are UL 508 listed as Manual Motor Controllers for AC Motor Starting Across-the-line and AC General use. This new 16 page catalog includes the 3 different handle designs, which are all available in gray/black or yellow/red housings. Electrical ratings are 25-150A / 600V. The switches are non-fused DIN Rail mountable. Neat features include: snap-on auxiliary switches, door mounting kit and a retrofit 30A fuse holder. Also featured are Enclosed Motor Disconnect Switches & Fused Enclosed Motor Disconnect Switch (30A) in plastic or stainless housings.

Altech Corp.®
35 Royal Rd., Flemington, NJ 08822
908-806-9400
www.altechcorp.com

Industrial Enclosures



Altech Industrial Enclosures satisfy the most demanding requirements for housing and protecting components and devices. Extensive product offering features functional and appealing designs constructed of polystyrene, polycarbonate or cast aluminum. Rustproof and chemical resistant polystyrene and polycarbonate housings withstand bumps and dents. Elegant cast aluminum housings provide EMI Shielding and corrosion protection. Most enclosures feature ratings up to IP66 (NEMA 4X). Accessories and customization services are also available to meet almost any specification.

Altech Corp.®
35 Royal Rd., Flemington, NJ 08822
908-806-9400
www.altechcorp.com

22mm and 30mm Metallic Push Buttons



Altech introduces a new series of metallic 22 and 30mm push buttons and selector switches complimented with a selection of LED remote indicating devices and pilot lights. These devices offer ideal cost-effective solutions for control circuits utilizing both direct and remote management applications. All assemblies and enclosures are UL Recognized and offer both the highest quality and flexibility needed to satisfy almost any push button application. Ease of assembly has been engineered into the design: the only tool necessary for installation is a screwdriver. We also offer a new safety shroud as shown in photo.

Altech Corp.®
35 Royal Rd., Flemington, NJ 08822
908-806-9400
www.altechcorp.com

Circuit Protection Devices



Altech the market leader in UL508 Manual Motor Controllers/ Miniature Circuit Breakers now introduces UL489 Miniature Molded Case Circuit Breakers and UL1077 Supplementary Protectors. The UL489 versions are DIN rail mounted, 17.5mm wide, and thermal magnetic. They have ratings of 0.2-63A/240V AC, 0.2-32A/480Y/277V AC and a rating of 0.2-63A/125/250V DC. Short circuit interrupt capacity is 10kA. Plus they offer a positive trip indicator, and are line/load reversible. The UL1077 versions are DIN rail mounted, 17.5mm wide and thermal magnetic with a rating of 0.5-63A/480Y/277V AC, 50/60Hz.

Altech Corp.®
35 Royal Rd., Flemington, NJ 08822
908-806-9400
www.altechcorp.com

Terminal Blocks



Altech offers a NEW Terminal Block catalog with the most competitively priced blocks in the industry. We feature screw and spring clamp models for DIN rail and panel mount applications. This advanced line of wire termination products will increase your design options and help to get the job done more efficiently. Our line of blocks include feed-through (single, double or triple level), distribution, ground, fuse, disconnect, thermocouple, surge suppressor and indicator. A wide variety of accessories, tools and ferrules are available.

Altech Corp.®
35 Royal Rd., Flemington, NJ 08822
908-806-9400
www.altechcorp.com

Safety Relays



Altech has the broadest line of safety relays that meet the New ASME A17.1-2000 specification. Our Safety Relay catalog and flyer outlines a complete selection of the safety relays featuring forced-guided contacts, a mandatory requirement of the European Machinery Directive EMD 89/392 EEC, which makes them indispensable when designing safety circuits for the international market. Our relays are approved for use in safety applications such as Emergency Stop, Two Hand Safety, Safety Gate, or as specified in IEC 204, EN 60204, and DIN/VDE 0113.

Altech Corp.®
35 Royal Rd., Flemington, NJ 08822
908-806-9400
www.altechcorp.com

Liquid Tight Strain Reliefs



This 64-page catalog introduces Altech's full line Liquid Tight Strain Reliefs (Cord Grips) which are used to seal cable entries, keep contaminants from entering enclosures, provide strain relief and thus reduce stress on components and termination points inside enclosures. Available in standard, high-performance, and economy versions, functions include Straight-Through, Increased Strain Relief, Bend Protection, Pull/Bend Protection, Multi-conductor, Flat Cable and EMI/RFI. They can be used with almost any type of cable, cord or conductor - solid, stranded, flat, shielded, high temperature, etc.

Altech Corp.®
35 Royal Rd., Flemington, NJ 08822
908-806-9400
www.altechcorp.com

altechcorp.com

Altech Corp.®

Quality
Endorsed
Company



ISO 9001:2000
CERTIFICATE

Altech Search

Google Custom Search

Home

Stock Check

Distributors

Information

News

Contact Us

Rep / Dist Login

Altech Mexico



PRODUCTS

Circuit Protection / Control >

Connectors >

Enclosures >

European Spare Parts >

Foot Switches

Interface Modules >

Power Supplies >

Push Buttons & Pilot Lights >

Relays & Contactors >

Sensors >

Terminal Blocks >

Wire & Cable Management >



Busbar
and Power
Distribution



Circuit
Protection
Devices



Contactors
and Overload
Relays



DIN
Enclosures



Din Rail
Terminal
Blocks



Distribution
Blocks



Eurostrips



European
Fuses



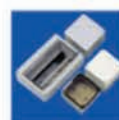
Ferrules



Foot
Switches



Inductive
Proximity
Sensors



Industrial
Enclosures



Interface
Modules



Liquid Tight
Strain Reliefs/
Corrugated
Tubes



Marking
Systems



Motor
Disconnect
Switches



Pin & Sleeve
Devices/
Receptacles



Power
Semiconductors



Panel Mount
Terminal
Blocks



Power
Supplies



Printed Circuit
Board Terminal
Blocks



22 & 30 mm
Push Buttons



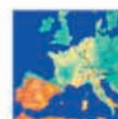
Safety
Relays



Slimline
Relays



Wire Duct



European
Spare Parts



DIN
Rail



Custom
Assembly

Altech Corporation
35 Royal Road
Flemington, NJ 08822-6000
Phone (908) 806-9400
Fax (908) 806-9490
www.altechcorp.com

Altech Corp.® 300-012010-5M